



CAPE MAY COUNTY MARKET SUMMARY

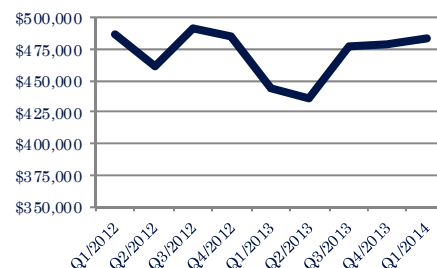
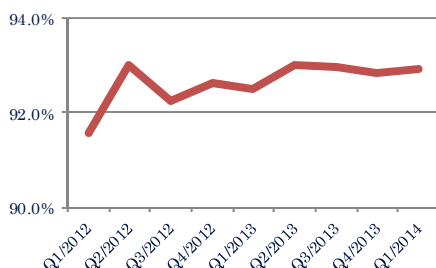
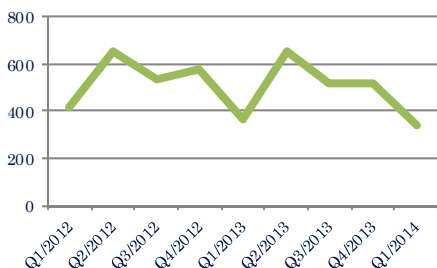
Focus On: Cape May County and Selected Cities

January 1st – March 31st 2014

Units Sold
331

Average Sale Price/List Price Ratio
92.9%

Average Sale Price
\$483,667

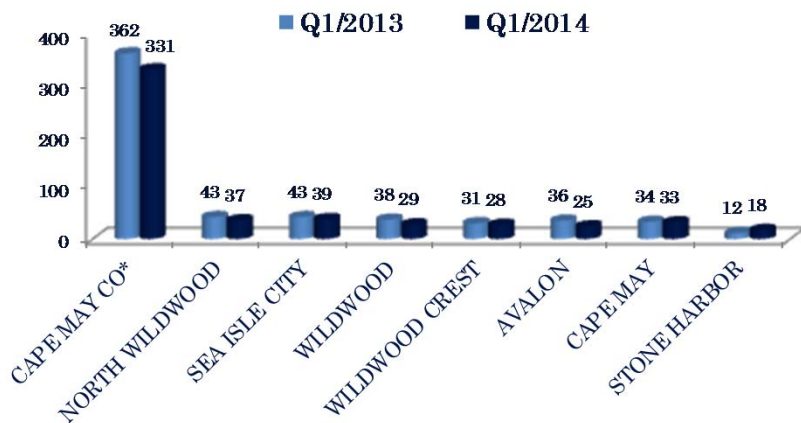


Down -7.7%
Vs. Year Ago

Up 0.5%
Vs. Year Ago

Up 8.8%
Vs. Year Ago

Units Sold

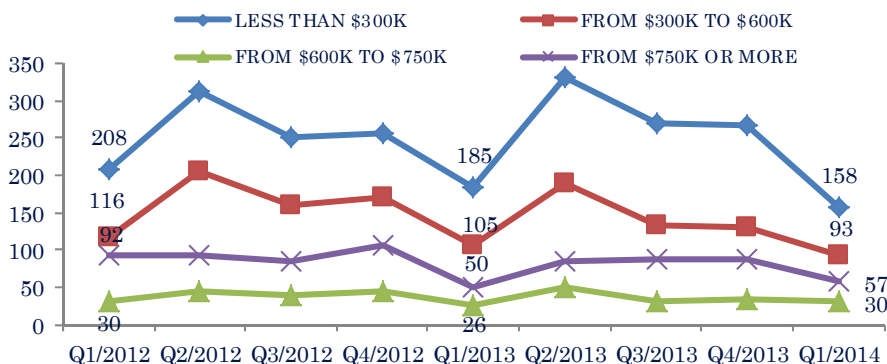


Units Sold

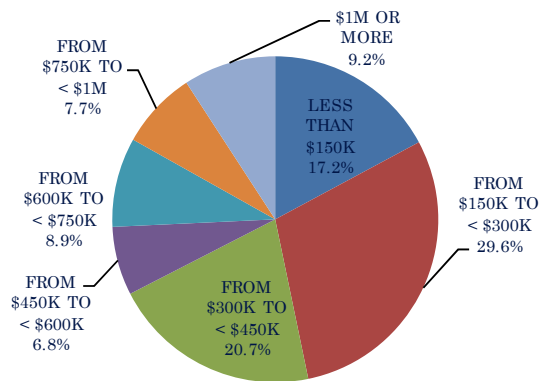
There was a decrease in total units sold in the first quarter, with 331 sold this quarter versus 366 in the first quarter of last year, a decrease of 7.7%.

This quarter's total units was less than last quarter, a decrease of 34.7%.

Units Sold



% of Total Market



* Represents the summary figure for Cape May County. Data for Avalon, Cape May, Sea Isle City, Wildwood, North Wildwood, and Wildwood Crest are broken out for display purposes. They are included in the Cape May County summary figures and do not represent all transactions in the county. Information included in this report is based on data supplied by Cape May MLS, and its member Association(s) of REALTORS, who are not responsible for its accuracy. Does not reflect all activity in the marketplace. "Information contained in this report is deemed reliable but not guaranteed, should be independently verified, and does not constitute an opinion of Cape May MLS or Long & Foster Real Estate, Inc."

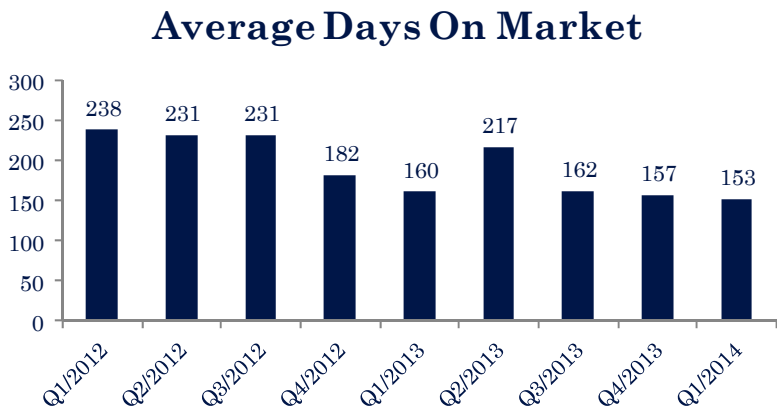
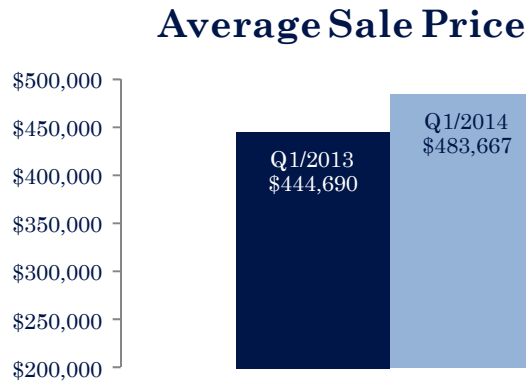
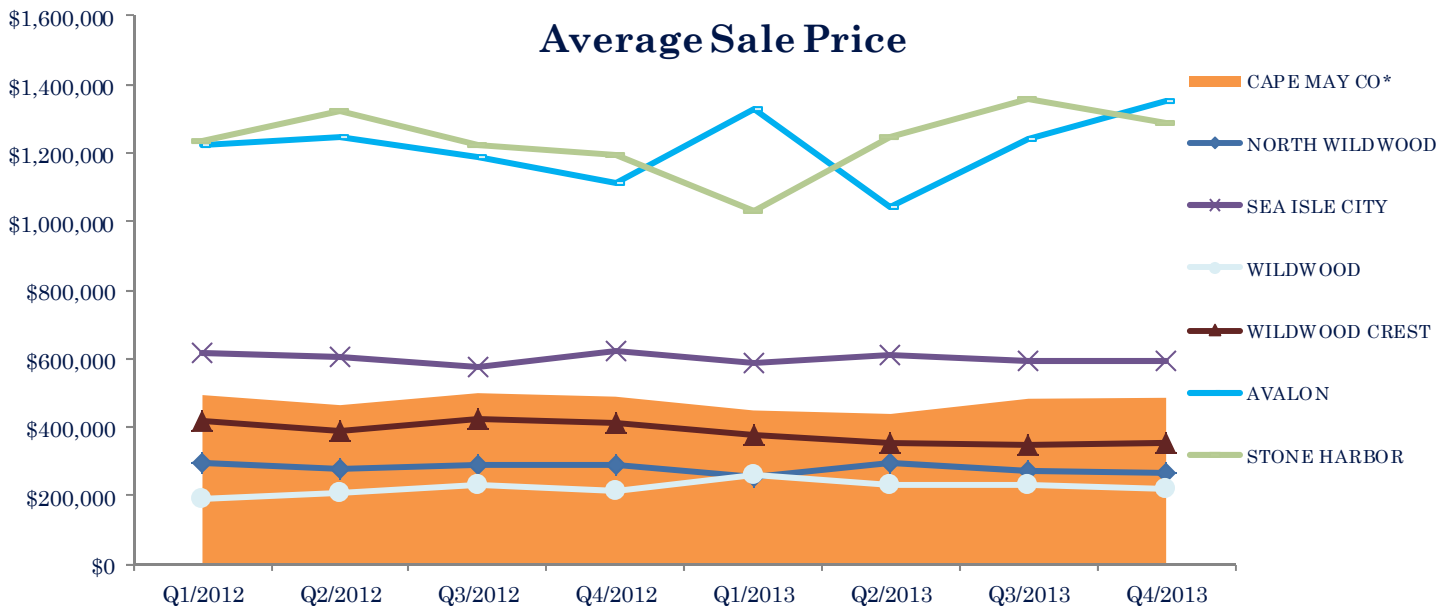




CAPE MAY COUNTY MARKET SUMMARY

Focus On: Cape May County and Selected Cities

January 1st – March 31st 2014



Days on Market

This quarter, the average number of days on market was 153, a decrease of 4.9% from the average in the first quarter last year, which was 160.

* Represents the summary figure for Cape May County. Data for Avalon, Cape May, Sea Isle City, Wildwood, North Wildwood, and Wildwood Crest are broken out for display purposes. They are included in the Cape May County summary figures and do not represent all transactions in the county. Information included in this report is based on data supplied by Cape May MLS, and its member Association(s) of REALTORS, who are not responsible for its accuracy. Does not reflect all activity in the marketplace. "Information contained in this report is deemed reliable but not guaranteed, should be independently verified, and does not constitute an opinion of Cape May MLS or Long & Foster Real Estate, Inc."

